



Welcome to Year 1 Beech Class

Miss Larkin

Mrs Lambert

Mr Durrant



+

Year 1 Routines

PE

Wednesday - Games Skills with Complete Coaching

Thursday - Team sports with class teacher

- Children need shorts, T shirt and trainers.
- As the weather gets colder they may wear leggings/tracksuit bottoms, fleeces or sweatshirts.
- Children need their own PE kit in every day.
- Please take earrings out before school on Monday.





+



Home Learning

Each week the children will get:

- Spellings - spelling rule with words to match and key words
- Fluency facts
- A talk task
- A math game every other week
- Reading - try to read every day and remember to fill in the reading diary
- Numbots - try to play Numbots for 20 minutes per week



Home Learning is given out on Wednesday and should be returned on Monday.



+



o



The School Day

- Coming in - independence
- Active Break
- Fruit Break - Milk
- Free hot school meal for all children in KS1
- Daily Mile

Time to
Go Home!

Please let me know if someone else is collecting
your child.



Curriculum

- Maths - White Rose
- English - The Write Stuff

Topics

- Science
 - How Does Your Garden Grow? - Plants
 - Animal Allsorts - Where Do Different Animals Live?
- Geography
 - Season's Greetings - What are Seasons?
 - What Is It Like Where We Live? - Local Study
- History
 - It's Not All About You! - Toys Through Time
 - Who Were Our Greatest Explorers? - Scott of the Antarctic

We will visit the library on Monday afternoons



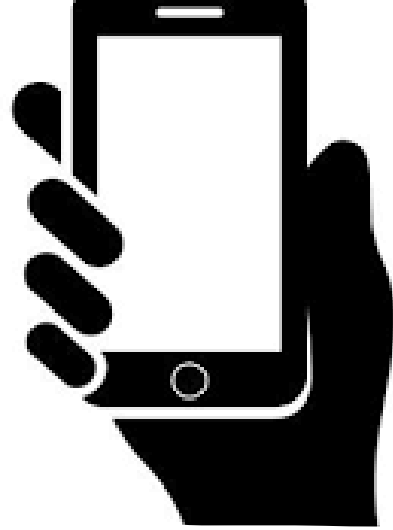
School Rules

Ready, Safe, Respectful

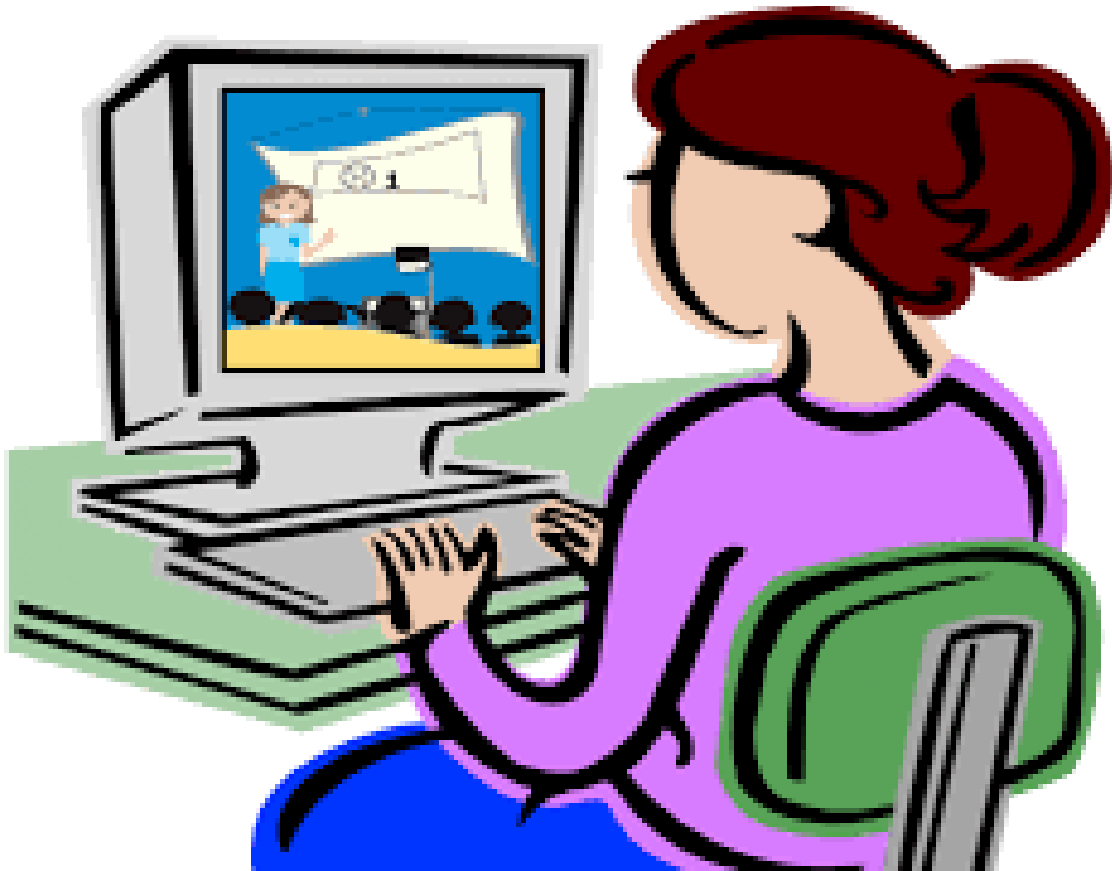
School Values

Respect, Resilience, Aspiration, Trust





Who to Contact in School



- Class teacher before or after school if it is brief.
- Phone the school office and leave a message. I will phone you back.
- Mrs Dixon - Home School Link Worker
- Make sure the office has up to date contact numbers so we can contact you.
- E-mail beechclass@shawfield.surrey.sch.uk